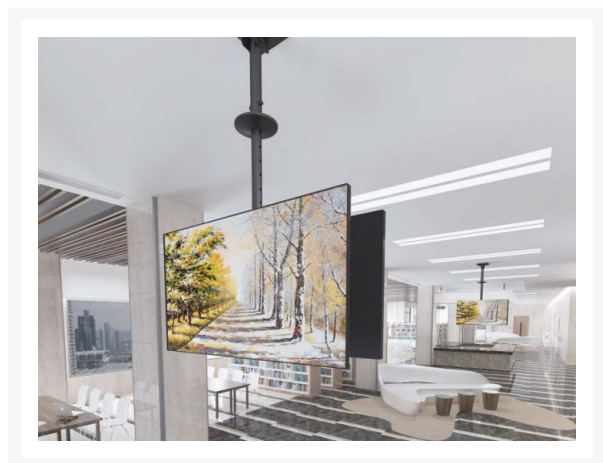
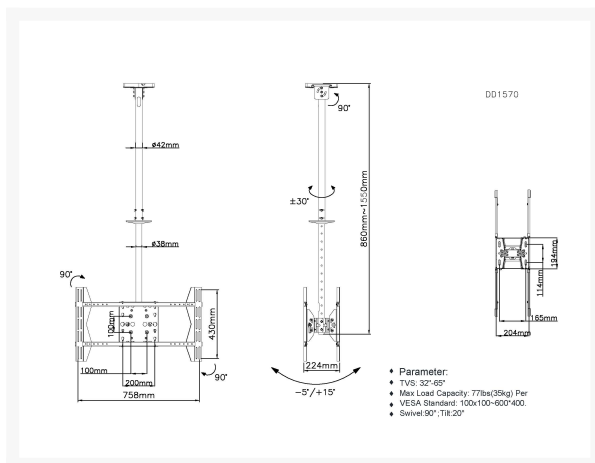


650370 32"-75" Ceiling Mount Dual Screen TV Bracket

Product Images



Short Description

- Max VESA support: 600 x 400
- Max Loading weight : 60kgs (per screen)
- Compatible with landscape and portrait mounting
- Integrated bubble level assures easy installation alignment
- Adjustment knob enables a full range of tilt/swivel action
- VESA standards compliant
- Built-in Cable management

Description

The industrial-grade double TV ceiling mount from equip is the perfect choice for signage applications. The adjustable tilt device allows installation with precise and even screen tilt of the mounted screens for optimal screen visibility. The ideal choice to advertise to the public

Additional Information

Harmonized System (HS) code.	852990
Customs product code (TARIC).	8529909700
Dimensions (W x D x H).	1500 x 300 x 600 mm
Product weight (kg).	15
Anti-theft.	No
Cable management.	Yes
Bracket type.	Tiltable and Swivel
Distance to wall (Profile).	860-1618mm
Load Capacity (kg).	60KG (Per screen)
Material.	Stainless Steel
Pan (Swivel) range.	-30° ~ +30°
Screen Rotation.	-30° ~ +30°
Screens support quantity.	2
Support Curved TV (Monitors).	No
Tilt range.	-5° ~ +15°
VESA compatibility.	200x200,300x200,300x300, 400x200,400x400,600x400
Mount.	Ceiling mount
Approval and Compliance.	RoHS
Package Contents.	650370 Manual screws kits
Color.	Black
EAN.	4015867207970
Model Number.	650370

