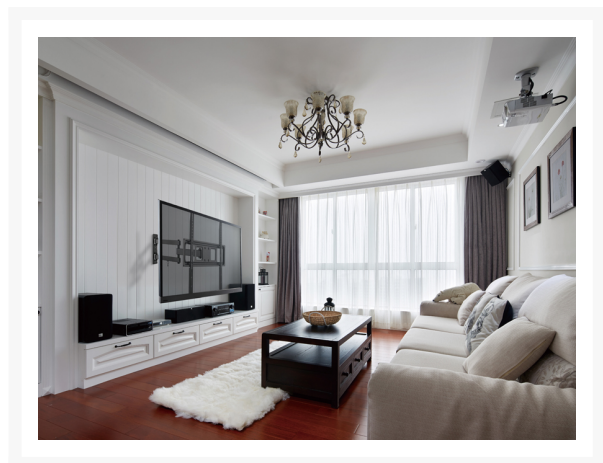
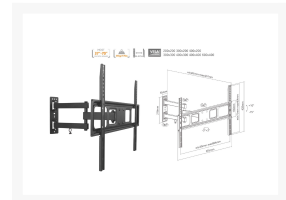
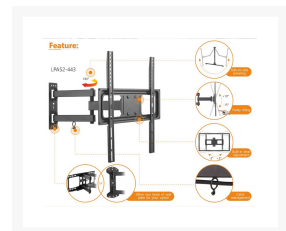
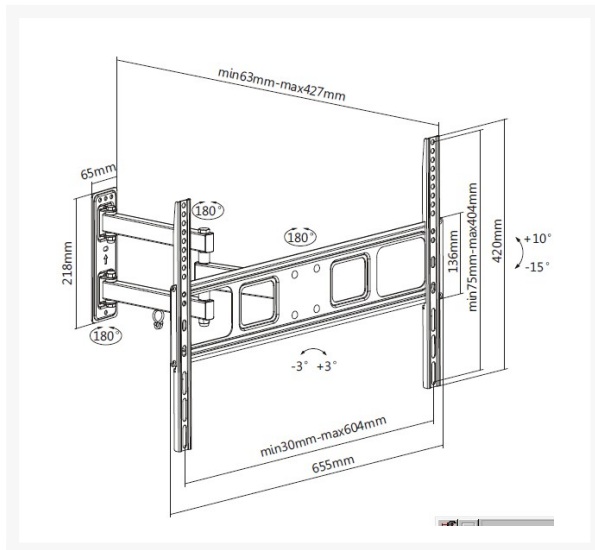


650342 37"-70" Articulating TV Wall Bracket

Product Images





Short Description

- Max. Load Capacity: 35Kg
- Max. VESA: 600x400
- Full motion mount
- VESA standards compliant
- Free-tilting design for multiple monitor viewing angles
- Level adjustment ensures perfect positioning
- Build-in cable management

Description

The equip® TV Wall Mount Bracket is a compact but sturdy product that ensures a reliable installation of your LCD/TV. Follow the graphic guide included in the package, you can install your TV on your own with ease. The wall bracket fits most of the wall materials- brick, concrete and wood, making the ideal choice for you to set up your screens.

Additional Information

Harmonized System (HS) code.	852990
Customs product code (TARIC).	8529909700
Mounting hole pattern	Standard VESA
Anti-theft.	No
Cable management.	Yes
Bracket type.	Tiltable and Swivel
Installation.	Solid Wall,Single Stud
Distance to wall (Profile).	63~427mm
Load Capacity (kg).	35kg
Material.	Stainless Steel
Pan (Swivel) range.	+90°~-90°
Screens support quantity.	1
Support Curved TV (Monitors).	Yes
Tilt range.	+10°~-15°
VESA compatibility.	100x200,200x200,300x200, 300x300,400x200,400x300, 400x400,600x400
Mount.	Wall mount
Approval and Compliance.	ROHS
Package Contents.	650342 Manual screws kits
Color.	Black
EAN.	4015867225455
Model Number.	650342
Dimensions (W x D x H).	655 x 420 x 427 mm
Product weight (kg).	3.12

